

# 第10回札幌オータムチェス大会



2015年10月11日、12日  
主催：札幌チェスクラブ

第 10 回  
札幌オータムチェス大会

棋 譜 集

2015 年 10 月 11 日 (日), 12 日 (月)  
札幌市中央区北 2 条西 7 丁目  
かでの 27 310 室  
主催：札幌チェスクラブ

## 第10回 札幌オータムチェス大会 組み合わせ表／結果

---

### 第1ラウンド

	白		黒
1	杉本 公一	1-0	佐藤 泰司
2	齊藤 直弘	0-1	西森 敏之
3	吉井優紀彦	1-0	小屋畑 拓

### 第4ラウンド

	白		黒
1	齊藤 直弘	0-1	杉本 公一
2	吉井優紀彦	1-0	西森 敏之
3	佐藤 泰司	1-0	小屋畑 拓

### 第2ラウンド

	白		黒
1	西森 敏之	0-1	杉本 公一
2	佐藤 泰司	0-1	吉井優紀彦
3	小屋畑 拓	0-1	齊藤 直弘

### 第5ラウンド

	白		黒
1	杉本 公一	1-0	小屋畑 拓
2	吉井優紀彦	0-1	齊藤 直弘
3	西森 敏之	0-1	佐藤 泰司

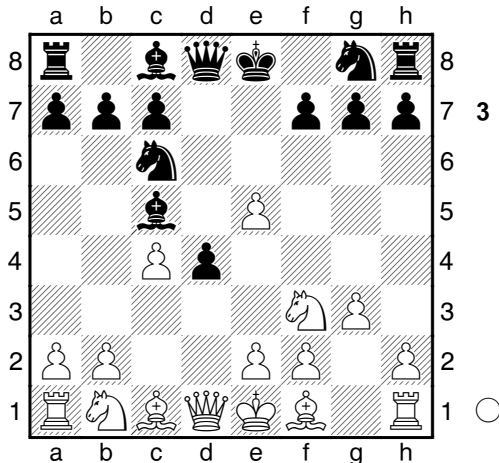
### 第3ラウンド

	白		黒
1	杉本 公一	1-0	吉井優紀彦
2	小屋畑 拓	0-1	西森 敏之
3	齊藤 直弘	1-0	佐藤 泰司

**D09**  
**2025**  
**1594**  
 SapporoAutumn2015 (1.1) 11.10.2015  
 [Fritz 11 (30s)]

D09: Albin Counter Gambit: Main line with  
 5 g3

**1.d4 d5 2.c4 e5 3.dxe5 d4 4.Nf3 Nc6**  
**5.g3 Bc5** Diagram



last book move **6.Bg2**

[ 6.a3± ]

**6...Be6**

[ 6...f6!? 7.exf6 Nxf6± ]

**7.0-0+ Qe7**

[ 7...f6 8.a3+- ]

**8.Nbd2 0-0-0 9.a3 d3**

[ 9...a6 10.b4 Bb6 11.b5 axb5  
 12.cxb5+- ]

**10.b4 dxe2 11.Qxe2** Diagram

(Diagram 4)

**Nd4?**

[ 11...Bd4 12.b5 Bxa1 13.bxc6 b6+-  
 ( 13...bxc6?? 14.Nb3+- ) ]

**12.Qd1 Nxf3+**

[ 12...Bb6 cannot change destiny 13.c5  
 Bxc5 14.bxc5+- ]

**13.Qxf3**

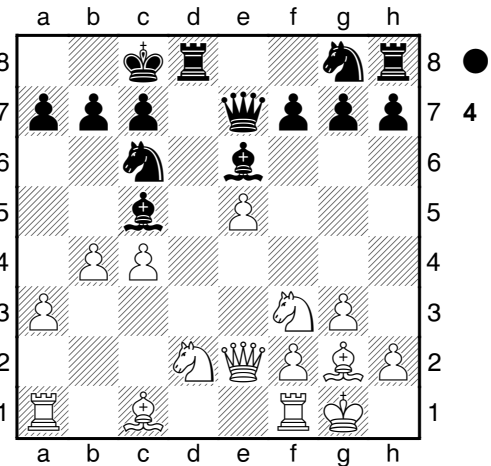
[ 13.Bxf3?! Bd4 14.Ra2 Nh6± ]

**13...Bxf2+**

[ 13...c6 does not improve anything  
 14.bxc5 f5 15.Rb1+- ]

**14.Rxf2 c6 15.Bb2**

[ 15.Ne4!? and White can already relax  
 Nh6 16.Nd6+ Kb8 17.Bxh6 gxh6+- ]



**15...Nh6**

[ 15...Kb8 doesn't do any good 16.Ne4  
 Bxc4 17.Nd6+- ]

**16.Ne4 Nf5**

[ 16...Kb8 doesn't change the outcome of  
 the game 17.Nd6 Ng4 18.Re2+- ]

**17.Bh3**

[ 17.b5 keeps an even firmer grip cxb5  
 18.cxb5 Rd7+- ]

**17...g6 18.Bxf5 gxf5**

[ 18...Bxf5 doesn't get the bull off the ice  
 19.Nd6+ Kb8 20.b5+- ]

**19.Nd6+ Kb8 20.Rc1**

[ 20.Bd4 seems even better Rhg8+- ]

**20...Rhg8**

[ 20...h5 a fruitless try to alter the course  
 of the game 21.b5 c5 22.b6+- ]

**21.Nxf5 Qg5**

[ 21...Qc7 doesn't get the cat off the tree  
 22.Nd6+- ]

**22.Qf4**

[ 22.Nd6 might be the shorter path Rd7  
 23.b5 Qg4+- ]

**22...Qh5**

[ 22...Qxf4 does not help much 23.Rxf4  
 Rd2 24.Bc3+- ]

**23.Qh4**

[ Δ23.Nd6!? makes it even easier for  
 White Rd7+- ]

**23...Rd1+ 24.Kg2**

[ 24.Rxd1 and White can already relax  
 Qxd1+ 25.Kg2 b5+- ]

**24...Qxh4 25.Nxh4 Rxc1 26.Bxc1 Bxc4**

**27.Bf4**

[ 27.Nf5 keeps an even firmer grip  
 Re8+- ]

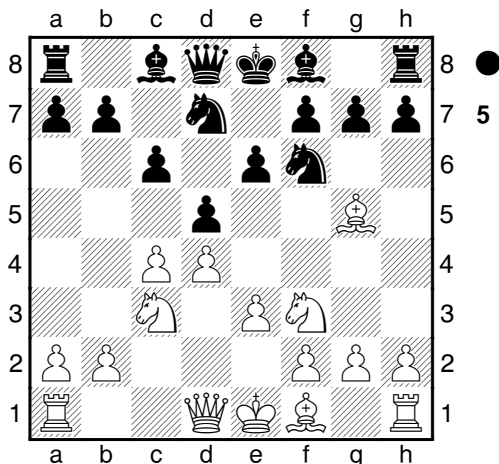
**27...Kc8**

[ 27...Be6 does not solve anything 28.Nf3 Bd5 29.Kg1+- ]  
**28.Nf5 Bd5+ 29.Kg1 h5**  
 [ 29...Kd7+- praying for a miracle ]  
**30.Ne7+**  
 [ 30.Ne7+ Kc7 31.Nxg8+- ]  
**1-0**

□ **Saito,Naohiro** **D52**  
 ■ **Nishimori,Toshiyuki** **1390**  
 SapporoAutumn2015 (1.2) **1837** 11.10.2015  
 [Fritz 11 (30s)]

D52: Queen's Gambit Declined: Cambridge Springs Variation

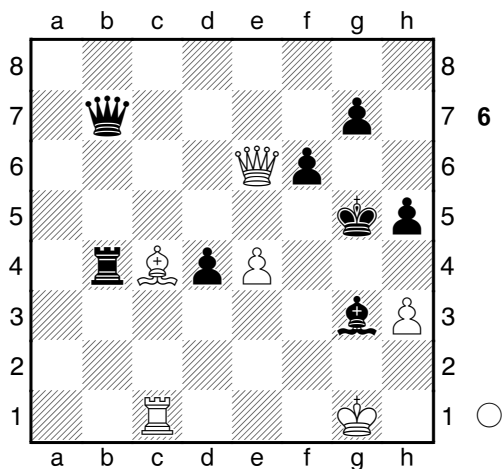
**1.d4 d5 2.c4 e6 3.Nc3 Nf6 4.Bg5 Nbd7 5.Nf3 c6 6.e3** Diagram



last book move **Qc7**  
 [ 6...Qa5 7.Rc1± ]  
**7.c5** White gets more space **b6 8.b4 a5**  
**9.a3 Qa7 10.Qb1??** White has let it slip away  
 [ Δ10.b5 Bb7 11.bxc6 Bxc6 12.cxb6± ]  
**10...axb4+ 11.Qxb4 bxc5 12.dxc5**  
 [ 12.Qb3 Qa5 13.Nd2 h6 14.Bxf6 Nxf6+- ]  
**12...Bxc5**  
 [ Δ12...Nxc5 might be the shorter path 13.Qb2 Nfe4 14.Nxe4 Nxe4+- ( 14...dxe4?! 15.Nd2+- ) ]  
**13.Qb1??** a blunder in a bad position  
 [ 13.Qb3 Qa5 14.Bxf6 Nxf6+- ]  
**13...h6**  
 [ 13...Qa5 keeps an even firmer grip 14.Bxf6 Nxf6 15.Qc2+- ]

**14.Bf4??** White crumbles in face of a dire situation  
 [ 14.Bxf6 Nxf6 15.Qc2 0-0+- ]  
**14...Nh5**  
 [ Δ14...Qa5 might be the shorter path 15.Qc2 Ne4 16.Bd3 Qxc3+ 17.Qxc3 Nxc3 18.Ne5+- ]  
**15.Be5**  
 [ 15.Bg3 Nxg3 16.hxg3 Bxe3 17.fxe3 Qxe3+ 18.Ne2 Nc5+- ]  
**15...Nxe5**  
 [ 15...Bxe3 keeps an even firmer grip 16.fxe3 Qxe3+ 17.Kd1 Nxe5 18.Qc1 Qxc1+ 19.Kxc1 Nxf3 20.gxf3+- ]  
**16.Nxe5 Qc7**  
 [ 16...Bxe3 17.Qb2 Rb8 18.Nb5 cxb5 19.Nc6+- ]  
**17.Nf3 Rxa3 18.Rxa3 Bxa3 19.Be2 Nf6 20.0-0 0-0 21.Qc2 Bd6 22.h3**  
 [ 22.Rc1 Qa7+- ]  
**22...e5**  
 [ 22...Bd7 and Black can already relax 23.Nd4+- ]  
**23.Rd1**  
 [ 23.Rc1 Qe7+- ]  
**23...Be6 24.e4**  
 [ 24.Rc1 Qe7+- ]  
**24...d4**  
 [ 24...Ra8 seems even better 25.Nd2+- ]  
**25.Nb1 Rb8**  
 [ 25...Ra8 makes it even easier for Black 26.Nbd2+- ]  
**26.Rc1 c5 27.Nbd2 Rb4 28.Nc4 Bxc4 29.Bxc4 Qb7 30.Bd3 Rb2 31.Qa4 Rb4**  
 Black threatens to win material: Rb4xa4  
 [ 31...Kh7 might be the shorter path 32.Qd1+- ]  
**32.Qc2 Nh5 33.Nxe5**  
 [ 33.g3+- ]  
**33...Bxe5 34.Qxc5 f6**  
 [ 34...Qb8 seems even better 35.Qc8+ Qxc8 36.Rxc8+ Kh7 37.g3+- ]  
**35.g3 Nxg3! Decoy: g3 36.fxg3 Bxg3**  
 [ Δ36...Rb3!?-+ ]  
**37.Bc4+ Kh8**  
 [ 37...Kh7!? deserves consideration 38.Qf5+ g6 39.Qxf6 Qg7 ( 39...Qxe4?? simply mating in 2 40.Qf7+ Kh8 41.Qg8# ) 40.Qxg7+ Kxg7± ]  
**38.Qf8+= Kh7 39.Qg8+ Kg6 40.Qe8+ Kg5 41.Qe6**

[ 41.Be2 g6 42.Rc5+ Kf4 43.Qxg6  
Rb1+ 44.Kg2 Qxe4+ 45.Qxe4+ Kxe4  
46.Kxg3 Rb3+ 47.Kg4 Re3= ]  
**41...h5** Diagram

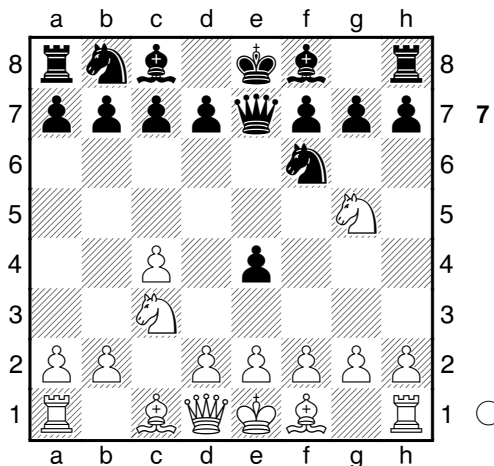


**42.Qf5+?**

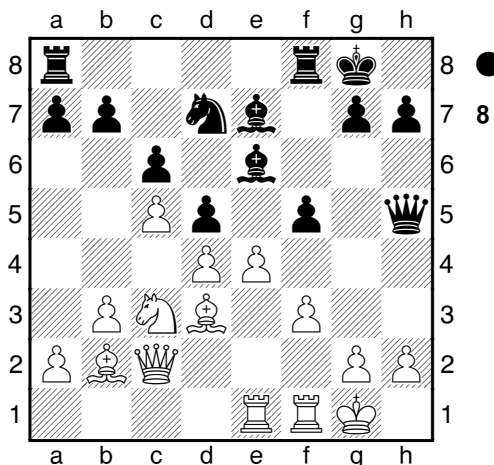
[  $\triangle$ 42.Be2 and White can hope to survive  
g6 43.Rc5+ f5 44.Rc6 $\bar{7}$  ]  
**42...Kh6+- 43.Bg8??** the position was bad,  
and this mistake simply hastens the end  
[ 43.Be2 Qf7 44.Rc8+- ]  
**43...d3 44.Qh7+ Kg5 45.Qf5+**  
[ 45.Rc5+ is one last hope Kf4 46.Qf5+  
Ke3 47.Rc1 Qxe4 48.Qc5+ Qd4  
49.Qxd4+ Rxd4 50.Ra1+- ]  
**45...Kh4 46.Bd5 Qb6+ 47.Kg2**  
[ 47.Kh1 is no salvation Rb2 48.Qxh5+  
Kxh5 49.Bf7+ Kh4 50.Rc5 Qxc5 51.e5  
Rh2# ]  
**47...Rb2+**  
[ 47...Rb2+ 48.Kf1 Rf2+ 49.Kg1 Rxf5+  
50.Rc5 Kxh3 51.Bb3 Qxc5+ 52.Kh1  
Rf1# ]  
**0-1**

**A22**  
 **Yoashii, Yukihiro** 1740  
 **Koyahata, Taku** 1299  
 SapporoAutumn2015 (1.3) 11.10.2015  
*[Fritz 11 (30s)]*

A22: English Opening: 1...e5 2 Nc3 Nf6  
**1.c4 e5 2.Nc3 Nf6 3.Nf3 e4 4.Ng5  
 Qe7** Diagram  
 last book move **5.Qc2** Increases the  
 pressure on e4 **d6**  
 [ 5...Nc6!? $\pm$  must definitely be



considered ]  
**6.Ngxe4 $\pm$  Nxe4 7.Qxe4**  
 [ 7.Nd5 Qe5 8.d4 Qxd4 $\pm$  ]  
**7...f5**  
 [ 7...Qxe4!?  
 8.Nxe4 Nc6 $\pm$  ]  
**8.Qc2 $\pm$  Be6**  
 [ 8...Nc6 9.e3 $\pm$  ]  
**9.e3**  
 [ 9.d4 Na6+- ]  
**9...Qf7 10.b3 c6 11.d4 Nd7 12.Bd3  
 Nb6 13.Bb2 Be7 14.0-0 0-0 15.Rae1  
 d5 16.c5 Nd7 17.f3 Qh5 18.e4** Diagram  
 [  $\triangle$ 18.Ne2+- ]



**18...a6??** sad, but how else could Black  
 save the game?  
 [  $\triangle$ 18...fxe4 19.fxe4 Rxf1+ 20.Rxf1  
 Nf6+- ]  
**19.exf5**  
 [ 19.exd5 makes it even easier for White  
 Nxc5 20.dxe6 Nxd3 21.Qxd3 Rad8+- ]  
**19...Bxf5**

[ 19...Nxc5 doesn't change anything anymore 20.g4 ( 20.Rxe6?! Nxe6 21.fxe6 Bd6+- ; ≤20.dxc5 Bxc5+ 21.Kh1 Bxf5 22.Nxd5 Bxd3 23.Qxd3 Qxd5+- ) 20...Qh4 21.dxc5+- ( ≤21.fxe6 Nxd3 22.Qxd3 Bd6+- ; 21.Rxe6?! Nxe6 22.fxe6 Rae8+- ) ]

**20.Bxf5 Rxf5**

[ 20...Qxf5 hardly improves anything 21.Qxf5 Rxf5 22.Rxe7+- ]

**21.Rxe7**

[ Δ21.g4 seems even better Qg6 22.Qxf5 Qxf5 23.gxf5 Bh4+- ]

**21...Nf6**

[ 21...Rf7 doesn't improve anything 22.g4 Qg6 23.Qxg6 hxg6 24.Re3+- ]

**22.Ne2 Rf8**

[ 22...Qg6 is still a small chance 23.Rxb7 Rxf3 24.Qxg6 Rxf1+ ( 24...hxg6?? 25.Rxf3 Re8 26.Nc3+- ) 25.Kxf1 hxg6+- ]

**23.Ng3 Qg5 24.Qxf5 Ne4 25.Qxg5**

[ 25.Qe6+ Kh8 26.fxe4 Qf6 27.Rxf6 gxf6 28.Qd7 dxe4 29.Rxh7+ Kg8 30.Qg7# ]

**25...Nxc5+- 26.Bc1**

[ 26.Bc1 Nf7 27.Rfe1+- ]

**1-0**

□	<b>Nishimori, Toshiyuki</b>	<b>B01</b>
■	<b>Suginoto, Koichi</b>	<b>1837</b>
	SapporoAutumn2015 (2.1)	<b>2025</b>
	[Fritz 11 (30s)]	11.10.2015

B01: Scandinavian Defence

**1.e4 d5 2.exd5 Qxd5 3.Nc3 Qd6 4.d4 Nf6 5.Bc4 a6** Diagram

(Diagram 9)

last book move **6.Qd3** Black is behind in development. Black's piece can't move: f8

[ 6.Nf3 Nc6 7.Be3 Bg4± ]

**6...Nc6** Black threatens to win material:

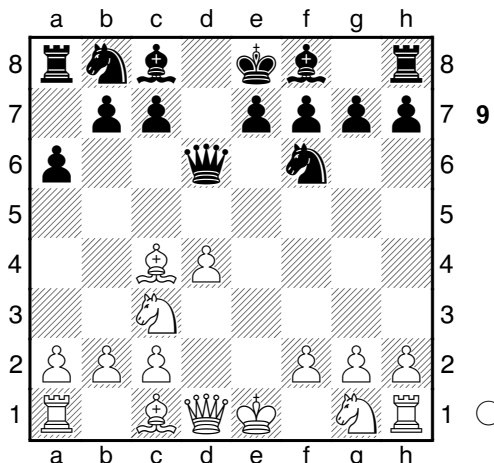
Nc6xd4 **7.Nge2** Black's piece can't move:

f8

[ 7.Nf3 Bg4 8.Be3 e6= ]

**7...b5** Black threatens to win material:

b5xc4



[ 7...Nb4!? is worth consideration 8.Qd2 Qc6̄ ]

**8.Bb3± Bb7 9.Bf4** White threatens to win

material: Bf4xd6 **Qd7** White has a very active position **10.0-0-0 e6** Controls d5

**11.d5** White threatens to win material: d5xc6

[ 11.a3 Na5 12.Ba2 Bxg2= ]

**11...Nb4=** Black threatens to win material: Nb4xd3 **12.Qd2**

[ 12.Qg3 Nbxg5 13.Nxd5 Nxd5= ]

**12...Nbxg5̄ 13.Nxd5 Nxd5 14.Nc3**

White threatens to win material: Nc3xd5

**Bb4 15.Bxd5 Bxd5** Black has the pair of bishops

[ 15...exd5?! 16.a3 Bxc3 17.Rhe1+ Kf8 18.Qxc3= ]

**16.Qd4 Bxc3 17.Qxc3 0-0 18.Qxc7**

[ 18.Bxc7?? Rac8+- ]

**18...Qxc7 19.Bxc7 Rfc8 20.Be5 Bxa2**

Diagram

(Diagram 10)

**21.b3?**

[ Δ21.Rd7̄ ]

**21...Bxb3+- 22.Rd2 a5 23.Kb2 Bd5**

**24.f4 a4 25.Bd6**

[ 25.f5 a3+ 26.Ka1 f6 27.fxe6 Bxe6+- ( 27...fxe5?! 28.Rxd5 Rxc2 29.e7̄ ) ]

**25...Rc6 26.Bb4**

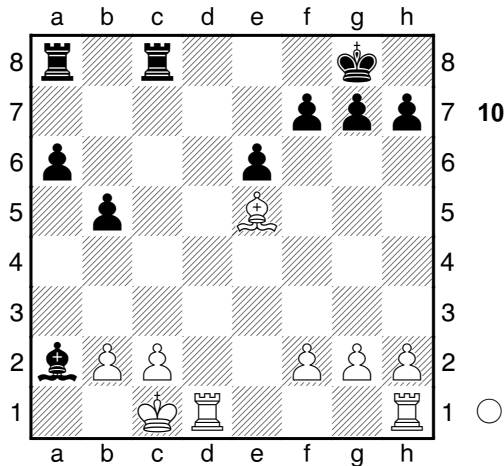
[ 26.Be7 Ra7 27.Bd8 a3+ 28.Ka1 Rc8+- ]

**26...Rc4 27.Bd6 a3+!** Deflection: a3

**28.Ka1**

[ 28.Bxa3 Rca4 Double attack

( 28...Rxf4 Deflection ; 28...Rca4 Decoy ) ]



**28...Rac8**  
 [ Δ28...Rd8 and Black can already relax 29.Be7 Rd7-+ ]

**29.Rb1**  
 [ 29.Kb1 hoping against hope Be4 30.Ka1 Rxc2 31.Rxc2 Rxc2 32.Bxa3 Rxc2 33.Be7-+ ]

**29...Rxc2 30.Rxc2 Rxc2 31.Rxb5 Rc1+**  
 [ Δ31...h5 ends the debate 32.g4 Rd2 33.Bxa3 Ra2+ 34.Kb1 Rxa3 35.gxh5 Rh3-+ ]

**32.Rb1 Rxb1+ 33.Kxb1 a2+**  
 [ 33...Bxc2?! 34.Bxa3 f6 35.Bc5- ]

**34.Kb2 h5 35.g3**  
 [ 35.Bb4 Kh7-+ ]

**35...f6**  
 [ 35...Kh7!? might be the shorter path 36.Bc5 f6 37.Bb4-+ ]

**36.Bb4 g5 37.Bc3**  
 [ 37.fxc3 fxc3 38.Bd2 g4-+ ]

**37...Kf7 38.fxc3 fxc3 39.Kc1**  
 [ 39.h3 Kg6-+ ]

**39...Kg6 40.Kd2**  
 [ 40.Kb2 Kf5-+ ]

**40...Kf5 41.Ke3**  
 [ 41.Ba1 cannot undo what has already been done e5-+ ]

**41...Kg4**  
 [ Δ41...e5!? seems even better 42.Bb2-+ ]

**42.Kf2 Kf5 43.Ke3 e5 44.Bb2 Ke6**  
 [ Δ44...Bc6!? keeps an even firmer grip 45.Kd3-+ ]

**45.Bc3 Bb3 46.Bb2**  
 [ 46.Kd3 does not win a prize Kf5 47.Ba1 e4+ 48.Ke3 Bc2-+ ]

**46...Bc2 47.Kd2 Bb1 48.Ke3 Kd5**

[ 48...Kf5 makes it even easier for Black 49.g4+ Kxc4 50.Bxe5-+ ]

**49.Kd2**  
 [ 49.Bc3 is not the saving move Bh7-+ ]

**49...e4 50.Ke3 Kc4**  
 [ Δ50...Ke6 secures the point 51.Kf2 Kf5-+ ]

**51.Kd2 Kd5 Twofold repetition 52.Ke3 Ke6 53.Bc3**  
 [ 53.g4 is not much help h4-+ ]

**53...Kf5 54.Bd4**  
 [ 54.h3-+ desperation ]

**54...Kg4 55.Kf2**  
 [ 55.Bc3 Kh3 56.g4-+ ]

**55...Kh3 56.Be5 Bd3 57.Ke3 g4 58.Kf2 Kxh2 59.Bc3 Kh3**  
 [ 59...h4 60.Ke3 hxg3 61.Kd4 g2 62.Kd5 g1Q 63.Bb2 a1Q 64.Bxa1 Qxa1 65.Kd6 e3 66.Ke6 e2 67.Kd6 e1Q 68.Kc6 Qe8+ 69.Kb7 Qf6 70.Kc7 Qfc6# ]

**60.Be5 h4 61.gxh4**  
 [ 61.Ke3 cannot change what is in store for ? hxg3 62.Kf4 g2 63.Kg5 g1Q 64.Kf6 g3 65.Kf7 g2 66.Bc3 Qa7+ 67.Ke6 g1Q 68.Bf6 Qg4+ 69.Kd5 Qb6 70.Bd4 Qge6# ]

**61...g3+! Decoy: g3 62.Kg1**  
 [ 62.Bxc3 a1Q Decoy ]

**62...e3**  
 [ 62...e3 63.h5 e2 64.Bc3 a1Q+ 65.Bxa1 e1Q# ]

**0-1**

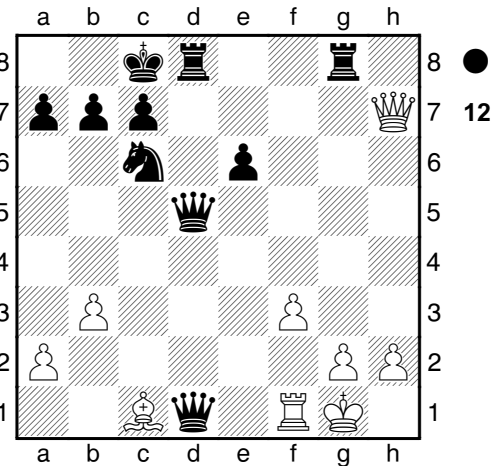
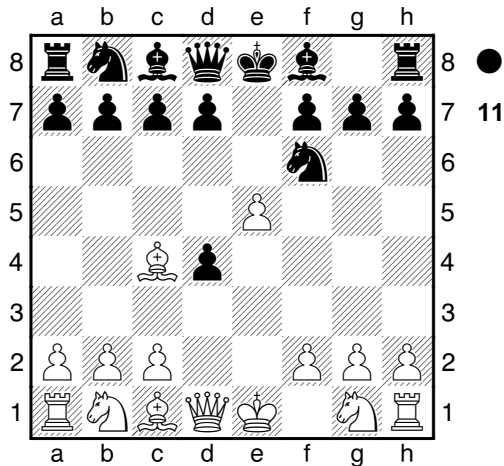
**C24**

**Sato, Yasuji** **1594**  
 **Yoshii, Yukihiro** **1740**  
 SapporoAutumn2015 (2.2) 11.10.2015  
*[Fritz 11 (30s)]*

C24: Bishop's Opening: 2...Nf6  
**1.e4 e5 2.Bc4 Nf6 3.d4 exd4 4.e5**  
 Diagram

(Diagram 11)

last book move **d5 5.exf6?**  
 [ Δ5.Bd3!? Nfd7 6.Nf3- ]  
**5...dxc4+ 6.Qe2+**  
 [ 6.Nf3 Nc6-+ ]



**6...Be6 7.fxg7 Bxg7 8.Nf3 Nc6 9.Ng5 Qd5 10.0-0 0-0-0 11.b3??** but even a better move would not have saved the game

[ 11.Nxe6 fxe6 12.Nd2+- ]  
**11...d3 12.cxd3**  
 [ 12.Qe3 doesn't do any good Bxa1 13.bxc4 Qxc4 14.Nxe6 fxe6 15.cxd3 Qxa2+- ]  
**12...cxd3 13.Qd2**  
 [ 13.Qe3 doesn't improve anything Bxa1 14.Nxe6 fxe6+- ]  
**13...Bxa1 14.Nc3**  
 [ 14.Nxe6 doesn't change the outcome of the game fxe6 15.f3 h5+- ]  
**14...Bxc3 15.Qxc3 Rhg8 16.f3 d2 17.Nxe6 fxe6**  
 [ 17...d1Q 18.h4 fxe6 19.Rxd1 Qxd1+ 20.Kh2 Rd3 21.Qh8 Rxh8 22.Bh6 Ne5 23.Be3 Rxe3 24.a4 Rg8 25.h5 Qd2 26.Kh3 Qxg2+ 27.Kh4 Nxf3# ]  
**18.Qc2 d1Q**  
 [ 18...Qd4+ 19.Rf2 Rxg2+ 20.Kxg2 Rg8+ 21.Kh3 Qxf2 22.Qg6 Rxg6 23.Bxd2 Qxf3+ 24.Kh4 Qg4# ]  
**19.Qxh7** Diagram

(Diagram 12)

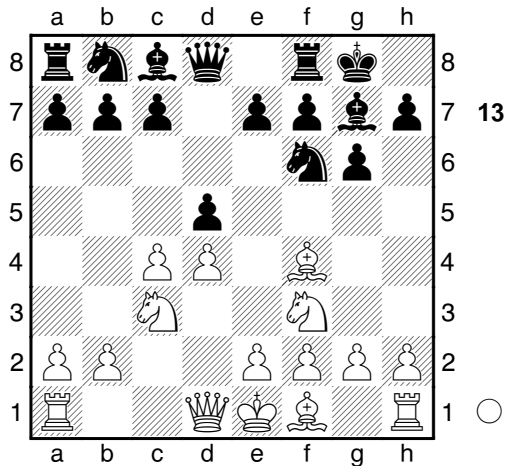
**Qxf1+!** Mate attack **20.Kxf1**  
 [ 20.Kxf1 Qb5+ Mate attack ]  
 [ 20.-- -- Mate attack ]  
**20...Qd1+ 21.Kf2 Nd4**  
 [ 21...Rd2+ 22.Bxd2 Qxd2+ 23.Kf1 Qxg2+ 24.Ke1 Qg1+ 25.Kd2 Rg2+ 26.Kc3 Qd4# ]  
**22.Qe4 Qxc1 23.g4**

[ 23.g3 does not win a prize Qh1 24.Qd3 Qxh2+ 25.Ke3 Nf5+ 26.Ke4 Nxc3+ 27.Ke3 Nf5+ 28.Ke4 Qh4+ 29.Ke5 Rxd3 30.Kxe6 Qe7+ 31.Kxf5 Rxf3# ]

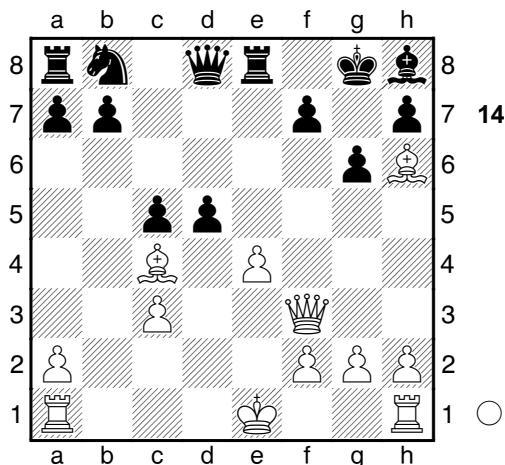
**23...Qd2+ 24.Kg3**  
 [ 24.Kg1 cannot change what is in store for ? Nxf3+! Mate attack 25.Kf1 Qc1+ 26.Kf2 Rd2+ 27.Kg3 Qg1+ 28.Kf4 Rxg4+ 29.Kxf3 Qg2+ 30.Ke3 Rxe4# ]  
**24...Ne2+ 25.Kf2**  
 [ 25.Qxe2 does not improve anything Qxe2 26.h4 Rd3 27.g5 Rxf3+ 28.Kg4 Rxb3+ 29.Kf4 Rf8# ]  
**25...Nc3+**  
 [ 25...Nf4+ 26.Kg3 Qg2+ 27.Kxf4 Qxh2+ 28.Ke3 Qd2# ]  
**26.Kf1**  
 [ 26.Qe2 doesn't get the cat off the tree Qxe2+ 27.Kg3 Qe1+ 28.Kh3 Rh8+ 29.Kg2 Rd2# ]  
**26...Nxe4**  
 [ 26...Nxe4 27.fxe4 Rxg4 28.h4 Rf8# ]  
**0-1**

**Koyahata, Taku** **D92**  
 **Saito, Naohiro** **1299**  
**1390**  
 SapporoAutumn2015 (2.3) 11.10.2015  
*[Fritz 11 (30s)]*

D92: Grünfeld: 4 Nf3 Bg7 5 Bf4  
**1.d4 Nf6 2.c4 g6 3.Nc3 d5 4.Nf3 Bg7 5.Bf4 0-0** Diagram  
 last book move **6.Qd2**  
 [ 6.e3 Nc6= ]  
**6...Re8**



[ 6...Nc6 7.e3= ]  
**7.Bh6 Bh8**  
 [ 7...dxc4 8.Bxg7 Kxg7 9.e4= ]  
**8.cxd5± Nxd5 9.e4 Nxc3 10.bxc3 Bg4**  
 [ 10...e5 11.Nxe5 Nd7 12.Bg5± ]  
**11.Qf4**  
 [ ⊠11.Ng5 e5 12.Bc4± ]  
**11...Bxf3= 12.Qxf3** White has the pair of bishops  
 [Weaker is 12.gxf3 e5 13.dxe5 Bxe5± ]  
**12...c5** Black threatens to win material:  
 c5xd4 **13.Bc4 e6** Secures d5 **14.d5**  
 [ 14.Rb1 Nd7 15.0-0 cxd4 16.cxd4  
 Bxd4 17.Rxb7 Ne5= ]  
**14...exd5=** Diagram

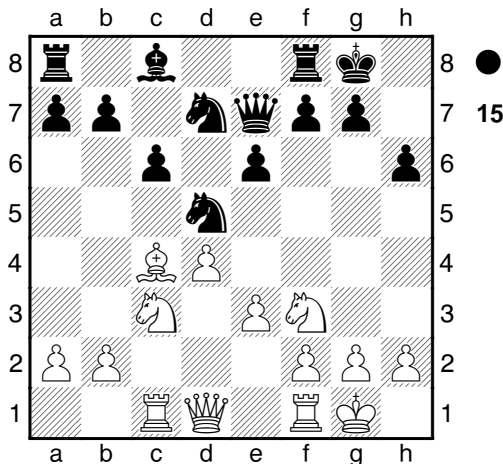


**15.Bxd5??** a weak move, ruining a winning position.  
 [ 15.Rd1 Bd4  
**A)** ≤16.Bxd5 Qxd5 17.0-0 Qxe4  
 ( 17...Rxe4?! 18.Rxd4 cxd4 19.Qf6= )  
 18.cxd4 Qxf3 19.gxf3 Na6± ;  
**B)** 16.Bb3 Rxe4+ 17.Kf1= ]  
**15...Qxd5-+ 16.0-0 Qxe4 17.Qg3**

[ 17.Qxe4 cannot change destiny Rxe4  
 18.Rfe1 Rxe1+ 19.Rxe1 Nc6-+ ]  
**17...Nc6 18.h4 Be5**  
 [ 18...Qc4!? seems even better  
 19.Rac1-+ ]  
**19.f4 Bxc3!** Decoy: c3 **20.Qxc3 Qd4+**  
**21.Qxd4 Nxd4**  
 [ 21...cxd4?! 22.Rab1 b6 23.f5-+ ]  
**22.g4**  
 [ 22.Rf2 doesn't get the bull off the ice  
 Re4-+ ]  
**22...Re2**  
 [ 22...Nc2 might be the shorter path  
 23.Rab1 Ne3 24.Rxb7 Nxg4 25.Bg5-+ ]  
**23.f5 gxf5 24.gxf5 f6 25.Rf4**  
 [ 25.Rf2 is not the saving move Rxf2  
 26.Kxf2 Nxf5 27.Rg1+ Kf7-+ ]  
**25...Kf7 26.a4**  
 [ 26.Rf2 doesn't change anything  
 anymore Rg8+ 27.Kf1 Re4-+ ]  
**26...Rae8**  
 [ 26...Rg8+ and Black can already relax  
 27.Kf1 Reg2 28.Rxd4 cxd4 29.Rc1  
 Rg1+ 30.Ke2 Rxc1 31.Bxc1-+ ]  
**27.Raf1**  
 [ 27.Rf2 is not much help Rxf2 28.Kxf2  
 Re2+ ( ≤28...Nxf5 29.Bf4-+ ) 29.Kg1  
 b6-+ ]  
**27...R2e4**  
 [ 27...Rg8+ seems even better 28.Kh1  
 Rgg2 29.Re1 Rh2+ 30.Kg1 Reg2+  
 31.Kf1-+ ]  
**28.R4f2**  
 [ 28.Kg2 does not solve anything b6-+ ]  
**28...Rg8+**  
 [ ⊠28...Rhx4!? might be the shorter path  
 29.Bc1-+ ]  
**29.Rg2 Rxg2+**  
 [ 29...Reg4 makes it even easier for  
 Black 30.Rxg4 Rxg4+ 31.Kf2 Nxf5  
 32.Bd2 Rxa4 33.Rb1-+ ]  
**30.Kxg2 Rxh4 31.Be3 b6 32.Kg3**  
 [ 32.a5 does not save the day Rg4+  
 ( ≤32...bxa5 33.Rc1 Re4 34.Bf2-+ )  
 33.Kh3 h5-+ ]  
**32...Re4**  
 [ 32...Re4 33.Bh6 c4-+ ]  
**0-1**

**D66**  
**2025**  
**1740**  
 SapporoAutumn2015 (3.1) 11.10.2015  
 [Fritz 11 (30s)]

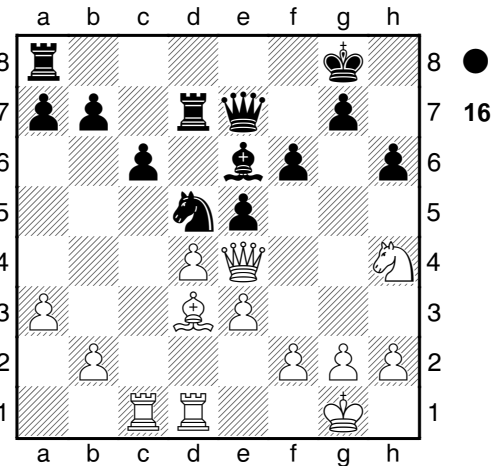
D66: Queen's Gambit Declined: Classical:  
 Main Line (7 Rc1 c6 8 Bd3)  
**1.d4 d5 2.c4 e6 3.Nf3 Nf6 4.Bg5 Be7**  
**5.Nc3 c6 6.e3 Nbd7 7.Rc1 0-0 8.Bd3**  
**h6 9.Bh4 dxc4 10.Bxc4 Nd5 11.Bxe7**  
**Qxe7 12.0-0** Diagram



last book move **N7f6**  
 [ 12...b6 13.Bd3± ]  
**13.a3** Covers b4 **Nxc3 14.Rxc3 Nd5**  
 Black threatens to win material: Nd5xc3  
**15.Rc1 Rd8 16.Bd3 f6** Prevents intrusion  
 on e5+g5 **17.Nh4 e5 18.Qf3 Be6**  
 [ 18...exd4 19.exd4 Qd7 20.h3± ]  
**19.Rfd1**  
 [ 19.dxe5 fxe5 20.Ng6 Qd6± ]  
**19...Rd7?**  
 [ 19...exd4!? 20.exd4 Qd7= ]  
**20.Qe4** Diagram  
 [ Δ20.dxe5 fxe5 21.Ng6± ]

(Diagram 16)

**20...Qf7??**  
 [ Δ20...g5 the only rescuing move 21.Nf3  
 Rad8± ]  
**21.Qh7++- Kf8 22.Ng6+ Ke8 23.Nxe5!**  
 the death sentence  
 [ 23.dxe5?! Qg8 24.Qxg8+ Bxg8± ]  
**23...Qg8**  
 [ 23...fxe5 24.Bg6 Combination ]



**24.Nxd7**  
 [ 24.Qxg8+ keeps an even firmer grip  
 Bxg8 25.Nxd7 Kxd7+- ]  
**24...Kxd7 25.Qxg8 Rxg8 26.b4 f5**  
**27.b5 g5**  
 [ 27...cxb5 doesn't improve anything  
 28.Bxb5+ Kd6 29.Rc5+- ]  
**28.bxc6+ bxc6 29.Rc5 Kd6 30.Rb1**  
**Rg7**  
 [ 30...Kc7 is no salvation 31.Rbc1 Ne7  
 32.Re5+- ]  
**31.g3**  
 [ 31.Rb8 seems even better Kc7 32.Rh8  
 h5+- ]  
**31...g4**  
 [ 31...Bc8 doesn't change anything  
 anymore 32.Rb8 Rc7 33.Ra5+- ]  
**32.Ba6**  
 [ 32.Rb8 keeps an even firmer grip  
 Ne7+- ]  
**32...Nc7**  
 [ 32...Nb6 does not improve anything  
 33.Re5+- ]  
**33.Bb7 Bd5 34.Bc8**  
 [ Δ34.Rbc1!? might be the shorter path  
 Ne6 35.Rxc6+ Bxc6 36.Rxc6+ Kd5  
 37.Rb6+ Kc4 38.Ba6+ Kd5 39.Rb5+  
 Kd6 40.Rxf5 Kc7+- ]  
**34...Rf7 35.a4**  
 [ 35.Ra5!? makes it even easier for White  
 Ne6+- ]  
**35...Rf8 36.Bb7 Ne6**  
 [ 36...Rb8 37.Ra5 a6 38.Rb2+- ]  
**37.Ra5 Ng5 38.Rb2**  
 [ Δ38.Kf1 and White can already relax  
 Nf3 39.Ke2 f4 40.gxf4 Re8+- ]  
**38...Nf3+ 39.Kf1 Nxe2+?**

[ 39...Bc4+ 40.Kg2 Ne1+ 41.Kg1 Nf3+ 42.Kh1 Bd5+- ]

**40.Ke2 Bc4+**

[ 40...h5 cannot undo what has already been done 41.Kd3 f4 42.gxf4+- ( 42.Rxa7?! is the less attractive alternative fxc3 43.fxc3 Nf1± )]

**41.Kd2 Nf3+**

[ 41...h5 a fruitless try to alter the course of the game 42.Bxc6! Double attack: c4/c6 Kxc6 43.Rc5+ Kd6 44.Rxc4+- ]

**42.Kc3 Bd5 43.Rxa7 Ng5 44.Ra8**

[ 44.a5 makes it even easier for White Bg2+- ]

**44...Rf7**

[ 44...Rxa8 hardly improves anything 45.Bxa8 Ne4+ 46.Kd3+- ]

**45.Ba6**

[ 45.a5 and White can already relax Ne6+- ]

**45...Ne4+ 46.Kd3 Rc7 47.Rd8+ Ke7**

**48.Rh8 c5**

[ 48...Kf6 there is nothing else anyway 49.Bc4 Ra7+- ]

**49.Rh7+ Bf7 50.Bc4**

[ 50.Rb7 keeps an even firmer grip Rxb7 51.Bxb7 Nf6+- ]

**50...Nd6**

[ 50...Ng5 is the last straw 51.Rxh6 Bxc4+ 52.Kxc4 cxd4+ 53.Kxd4 Ne6+ 54.Kd3 Ng5+- ]

**51.Bxf7 Nxf7 52.dxc5 Kf6**

[ 52...Ke6 is no salvation 53.Rb6+ Kd5 54.Ke2+- ]

**53.Rb6+ Kg5**

[ 53...Ke5+- otherwise it's curtains at once ]

**54.Rg7+ Kh5 55.Kd4 Rd7+ 56.Rd6!**

Deflection: f7 **Rxd6+**

[ 56...Rxd6+ 57.cxd6 Passed pawn ]  
[ 56...Nxd6 57.Rxd7 Pinning ( 57.Rxd7 Deflection )]

**57.cxd6 Nxd6 58.Re7 Kg5 59.Kd5 Ne4**

**60.Rxe4**

[ 60.Rxe4 Kg6 61.a5 Kh5 62.Rf4 Kg6 63.a6 Kg7 64.a7 Kh7 65.a8Q h5 66.Qf8 Kg6 67.Rxf5 h4 68.Qf7+ Kh6 69.Rh5# ]

**1-0**



**Koyahata,Taku**

**D37**

**1299**

**Nishimori,Toshiyuki**

**1837**

SapporoAutumn2015 (3.2)

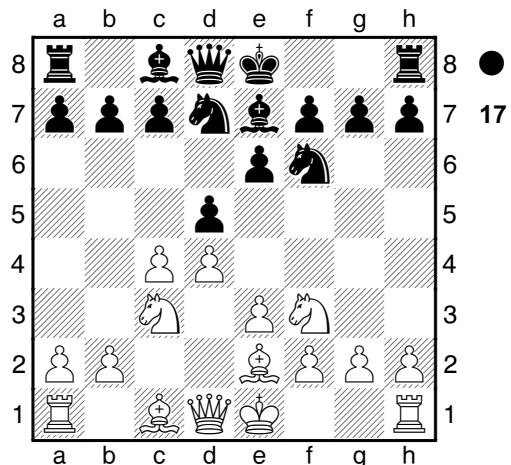
11.10.2015

[Fritz 11 (30s)]

D37: Queen's Gambit Declined: 5 Bf4

**1.d4 d5 2.c4 e6 3.Nc3 Nf6 4.Nf3**

**Nbd7 5.e3 Be7 6.Be2** Diagram



last book move **c5 7.0-0 0-0 8.b3 a6**

Controls b5 **9.Bb2 dxc4 10.Bxc4**

[ 10.bxc4!? cxd4 11.exd4± ]

**10...b5=** Black threatens to win material:

b5xc4 **11.Be2 Qc7**

[ 11...Bb7 12.Rc1= ]

**12.Qc2**

[ 12.Rc1 Rd8= ]

**12...Bb7 13.Rac1 Rac8 14.Rfd1 Bxf3**

**15.Bxf3 cxd4** White has the pair of

bishops **16.Rxd4 e5** Diagram

[ 16...Ne5 17.Qe2 Nxf3+ 18.Qxf3

Qa5 ]

(Diagram 18)

**17.Nd5??** an unfortunate move that relinquishes the win

[ 17.Rd2 Qa5 18.Qd1± ]

**17...Nxd5**

[ 17...Qxc2 and Black can celebrate victory 18.Rxc2 Rxc2 19.Nxe7+ Kh8+- ]

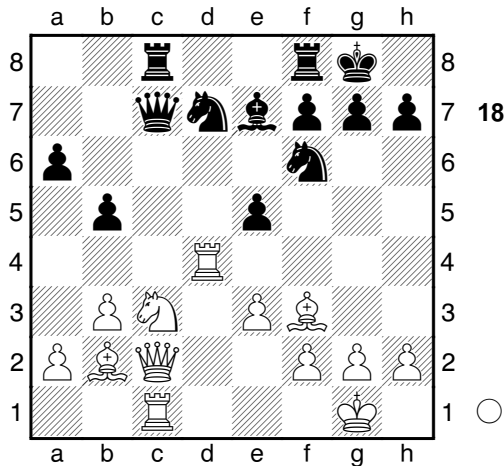
**18.Qxc7+- Rxc7**

[ 18...Nxc7?? 19.Rxd7 e4 20.Rxe7

( 20.Rcxc7?! is clearly worse Rxc7

21.Rxc7 Bd8+- ) 20...exf3 21.Rcxc7

Rxc7 22.Rxc7 fxc2 23.Ra7+- ]



**19.Rxd5**  
 [ Δ19.Rxc7 and the rest is a matter of technique Nxc7 20.Rxd7+- ]  
**19...Rxc1+= 20.Bxc1 Rd8**  
 [ 20...Nf6!? 21.Rd1 e4= ]  
**21.Bb2 f6 22.h3 g6** Consolidates h5  
 [ 22...Kf7 23.Rd1± ]  
**23.Kf1**  
 [ 23.Bc3 Nb8± ]  
**23...Kf7± 24.Ke2**  
 [ 24.Rd1 Nc5± ]  
**24...Ke6 25.e4 Rc8 26.Kd3**  
 [ 26.Rd1 Rc2+ 27.Rd2 Rc7= ]  
**26...f5 27.exf5??**  
 [ Δ27.Ke2= the rescuing straw ]  
**27...gxf5+- 28.Rxd7 e4+**  
 [ 28...Kxd7?! is the weaker alternative 29.Bxe5 Rd8 30.Bf4± ]  
**29.Ke3**  
 [ 29.Kd2 Kxd7 30.Be2 Bb4+ 31.Kd1 Kc6+- ]  
**29...Kxd7**  
 [ Δ29...Bg5+ makes it even easier for Black 30.Ke2 exf3+ 31.gxf3 Kxd7 32.Kd3+- ]  
**30.Bh5**  
 [ 30.Bd1 Rc6 31.Ke2+- ]  
**30...Rc2 31.Be5**  
 [ 31.Bd4 what else? Ba3 32.Kf4+- ]  
**31...Bc5+ 32.Kf4**  
 [ 32.Bd4 does not save the day Bxd4+ 33.Kxd4 Rxf2+- ]  
**32...Rxf2+ 33.Kg3 e3 34.Bc3**  
 [ 34.Bf4 does not solve anything Bd6 35.Bxd6 Kxd6+- ]  
**34...Bd6+ 35.Kh4 Rxc2 36.Bf3 Be7+**  
**37.Kh5 Rg5+**

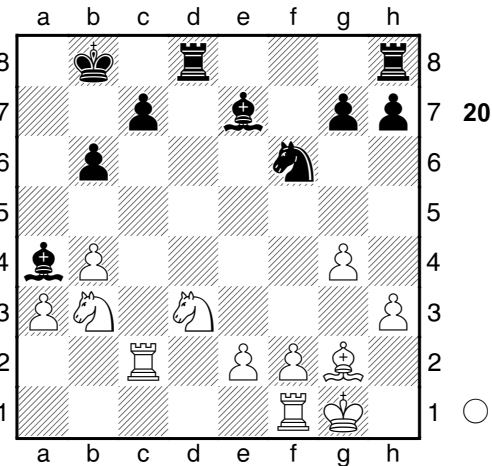
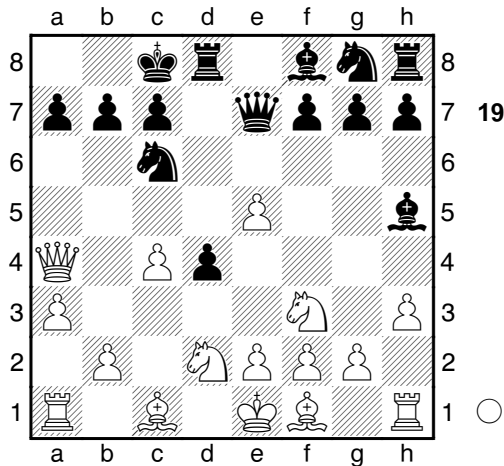
[ Δ37...Rg3 and Black can already relax  
 38.Kh6 Rxf3 39.Kg7 b4 40.Bd4 e2  
 41.Kh8 e1Q 42.a4 Rxh3 43.Kg8 Qg3+  
 44.Kh8 Qb8+ 45.Kg7 Qf8# ]  
**38.Kh4**  
 [ 38.Kh6 the only chance to get some counterplay Rg3 39.Bd1 Rxh3+ 40.Kg7+- ]  
**38...h6**  
 [ 38...Rg4+ 39.Kh5 Rh4# ]  
**39.Bd4 f4**  
 [ 39...Bb4 40.Bc6+ Kxc6 41.Bc3 Bxc3 42.b4 Be1# ]  
**40.Bg4+ Kd6**  
 [ 40...Rf5+ 41.Bf6 Bxf6# ]  
**41.b4**  
 [ 41.Bf5 is not the saving move h5 42.Bc5+ Kxc5 43.b4+ Kd4 44.Be4 Rd5# ]  
**41...Rd5+**  
 [ 41...Rd5+ 42.Bf6 Bxf6# ]  
 [ 41...Re5# ]  
**0-1**

**D08**  
 1390  
 1594  
 SapporoAutumn2015 (3.3) 11.10.2015  
 [Fritz 11 (30s)]

D08: Albin Counter Gambit  
 1.d4 d5 2.c4 e5 3.dxe5 d4 4.Nf3 Nc6  
 5.a3 Bg4 6.Nbd2 Qe7 7.Qa4 0-0-0 8.h3  
 Bh5 Diagram

(Diagram 19)

last book move **9.g4** White threatens to win material: g4xh5 **Bg6 10.Bg2 Kb8**  
 [ 10...d3 11.b4 Nxe5 12.Qxa7= ]  
**11.Qb3 b6**  
 [ 11...Qe8!? should be examined more closely 12.Nh4 d3 13.Nxg6 hxg6± ]  
**12.Qb5± Qc5?**  
 [ 12...Qe8 13.Nb3 Be4 14.Bf4± ]  
**13.Qa6**  
 [ Δ13.b4 might be the shorter path Qxb5 14.cxb5+- ]  
**13...Qa5±**  
 [ 13...Nxe5 14.Nxe5 Be4 15.Bxe4 c6



16.Nxc6+ Kc7 17.Qxa7+ Kd6 18.Nf3 g5 19.Nxg5 Qa5+ 20.Nxa5 Nh6 21.Bf4+ Kc5 22.b4# ]

**14.Qxa5 Nxa5**  
[ 14...bxa5 15.Ng1 Nge7 16.f4± ]

**15.0-0**  
[ 15.b4 Nc6 16.Bb2 f6+- ]

**15...f5?**  
[ 15...h5!?!± ]

**16.exf6!** a convincing end **Nxf6**  
[ 16...gxf6 17.b4 Combination ]  
[ 16...Nxf6 17.b4 Combination ]

**17.b4 Nb7**  
[ 17...Nc6 18.Bb2+- ]

**18.Ne5 Be8 19.Nb3 Bd6 20.Nd3**  
[ 20.f4 c5 21.bxc5 Bxc5+- ]

**20...Be7 21.Rb1 Nd6 22.c5**  
[ 22.Nxd4 Nxc4 23.Ne6 Rd7+- ]

**22...Nde4**  
[ 22...Nb5!?!± ]

**23.cxb6 axb6 24.Bb2 Nc3 25.Bxc3**  
[ 25.Rbe1?!+- ]

**25...dxc3± 26.Rbc1 c2**  
[ Δ26...Nd5 27.Bxd5 Rxd5 28.Rxc3 Bf6± ]

**27.Rxc2+- Ba4** Diagram

(Diagram 20)

**28.Rfc1??** allows the opponent back into the game  
[ Δ28.Ne5+- White missed this excellent chance ]

**28...Bxb3= 29.Rxc7 Bd5??** forfeits the advantage  
[ Δ29...Rd7 this is the best way to fight back 30.R7c3 Bd5= ]

**30.Rxe7+- g6**  
[ 30...Bxg2 doesn't get the bull off the ice 31.Kxg2 Rd7 32.Re6+- ]

**31.Bxd5**  
[ Δ31.Ne5 and White has prevailed Rde8 32.Bxd5 Rxe7 33.Nc6+ Kc7 34.Nxe7+ Kd6 35.Nxg6 hxg6 36.Rc6+ Kxd5 37.Rxf6 Rxh3+- ]

**31...Nxd5 32.Rf7 Rde8**  
[ 32...Rdf8 cannot change what is in store for ? 33.Rd7 Rd8 34.Rg7+- ]

**33.e3**  
[ 33.Rc6 might be the shorter path g5+- ]

**33...h5**  
[ 33...Ref8 doesn't get the cat off the tree 34.Rg7 Rfg8 35.Rxg8+ Rxg8 36.Rc6+- ]

**34.Rc6 hxg4 35.hxg4 Ne7**  
[ 35...g5+- the last chance for counterplay ]

**36.Rxb6+ Kc7 37.Rxg6**  
[ Δ37.Re6+- seems even better ]

**37...Rd8**  
[ 37...Rhf8 a last effort to resist the inevitable 38.Rfg7 Kb8 39.Rb6+ Ka8 40.Ra6+ Kb8+- ]

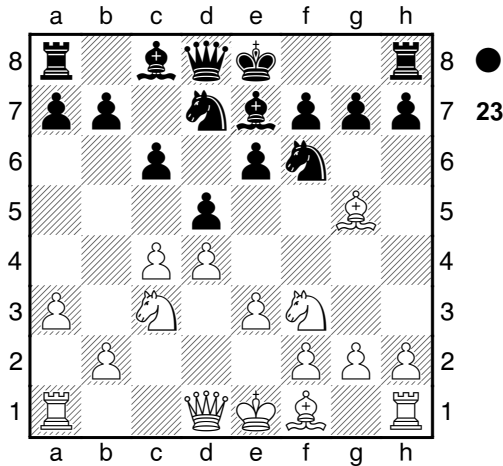
**38.Rxe7+ Kc8 39.Rc6+ Kb8 40.Nc5 Rd1+**  
[ 40...Rh6 is not much help 41.Rxh6 Rd1+ 42.Kg2 Kc8 43.b5 Rd2 44.Re8+ Rd8 45.Rc6+ Kb8 46.Rxd8+ Ka7 47.b6# ]

**41.Kg2 Rdh1**  
[ 41...Rd6 hardly improves anything 42.Rxd6 Rf8 43.Ra6 Rd8 44.Rb7+ Kc8 45.Rc6# ]



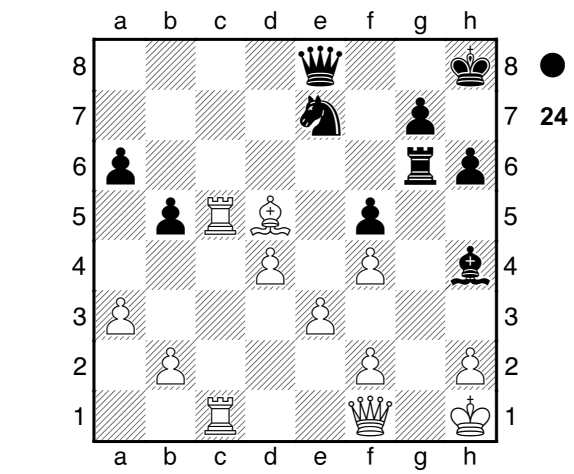
**Yoshii, Yukihiro** **D51**  
 **Nishimori, Toshiyuki** **1740**  
**1837**  
 SapporoAutumn2015 (4.2) 12.10.2015  
*[Fritz 11 (30s)]*

D51: Queen's Gambit Declined: 4 Bg5  
 Nbd7 sidelines  
**1.c4 Nf6 2.d4 d5 3.Nc3 e6 4.Bg5**  
**Nbd7 5.Nf3 c6 6.a3 Be7 7.e3** Diagram



last book move **a6** Controls b5 **8.Bd3**  
**dxc4 9.Bxc4 b5** Black threatens to win  
 material: b5xc4 **10.Bb3**  
 [ 10.Be2 0-0± ]  
**10...Nb6**  
 [ 10...Bb7!?= is noteworthy ]  
**11.Rc1 h6 12.Bh4 0-0 13.0-0**  
 White castles and improves king safety  
**Bb7 14.Bxf6 Bxf6** Black has the pair of  
 bishops **15.Ne4 Be7**  
 [ 15...Nd7 16.Ne1± ]  
**16.Qd3**  
 [ 16.Ne5 Rc8± ]  
**16...c5**  
 [ Δ16...Nd7!?= has some apparent  
 merit ]  
**17.Nxc5± Bxf3 18.gxf3 Nd5 19.Bc2**  
**f5??** further deteriorates the position  
 [ Δ19...Nf6± ]  
**20.Nxe6+- Qd7 21.Nxf8 Rxf8 22.Bb3**  
**Kh8 23.f4**  
 [ 23.Qc2 makes it even easier for White  
 Qd8+- ]  
**23...Bh4**  
 [ 23...Bd8 cannot change destiny  
 24.Qe2+- ]  
**24.Rc5 Ne7 25.Rfc1 Qe8 26.Qf1 Rf6**

[ 26...Qh5 a fruitless try to alter the  
 course of the game 27.Rc7+- ]  
**27.Kh1**  
 [ 27.Qh3 might be the shorter path g5  
 28.fxg5 hxg5+- ]  
**27...Rg6**  
 [ 27...Rd6+- is not the saving move ]  
**28.Bd5** Diagram  
 [ Δ28.Qh3 and White has prevailed Bxf2  
 29.Rf1 b4 30.Rxf2 bxa3 31.bxa3  
 Rf6+- ]

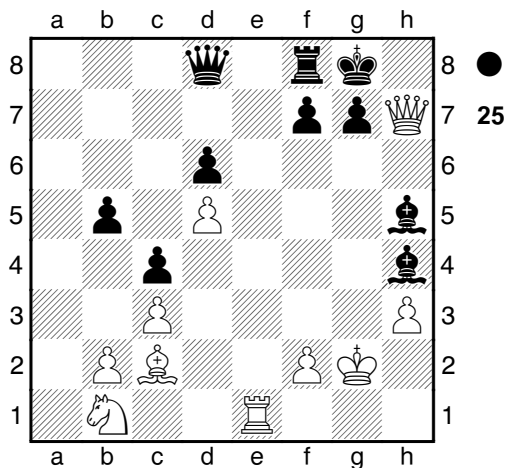


**28...Kh7??** gives the opponent new  
 chances  
 [ Δ28...Nxd5 was much better 29.Rc8  
 Bd8± ]  
**29.Bf3+- Qf7**  
 [ 29...Rd6+- is one last hope ]  
**30.Bh5 Qe6**  
 [ 30...Bf6 doesn't get the bull off the ice  
 31.Bxg6+ Qxg6 32.Qg2+- ]  
**31.Bxg6+ Nxg6 32.Qg2 Be7**  
 [ 32...Ne7 cannot undo what has already  
 been done 33.Qb7 Qb3 34.R5c2+- ]  
**33.Rc6**  
 [ Δ33.Rg1!? keeps an even firmer grip  
 Qf7 34.Rc7 Nh4+- ]  
**33...Qf7 34.Rg1**  
 [ Δ34.Rc7 and White has triumphed Qg8  
 35.Qc6 Bh4+- ]  
**34...Bf6**  
 [ 34...Nh4 the only chance to get some  
 counterplay 35.Qg3 b4 36.axb4  
 Bxb4+- ]  
**35.Qxg6+!** it's all over  
 [ 35.Qxg6+ Qxg6 36.Rxg6 Kxg6

37.Rxa6+- ]  
1-0

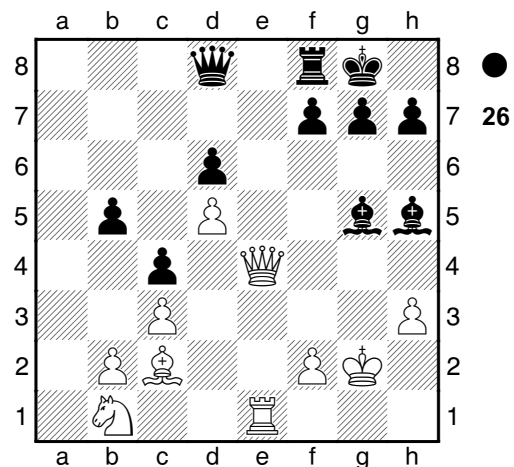
**Sato, Yasuji** **B20**  
 **Koyahata, Taku** **1594**  
 SapporoAutumn2015 (4.3) **1299**  
 [Fritz 11 (30s)] 12.10.2015

Diagram



B50: Sicilian: 2...d6, Miscellaneous  
**1.e4 c5 2.Bc4 Nc6 3.Nf3 d6 4.0-0**  
 last book move **Bg4**  
 [ 4...g6 5.d4 cxd4 6.Nxd4= ]  
**5.Re1**  
 [ Δ5.Bxf7+!? Kxf7 6.Ng5+ Ke8  
 7.Qxg4+- ]  
**5...Nf6± 6.h3** White threatens to win  
 material: h3xg4 **Bh5 7.c3** Secures b4+d4  
**a6** Covers b5  
 [ 7...Qb6 8.d3= ]  
**8.d4± e6** Consolidates d5 **9.d5**  
 White wins space **b5?**  
 [ 9...Ne5 10.Be2± ]  
**10.Bb3**  
 [ 10.dxc6!? bxc4 11.g4+- ]  
**10...c4 11.Bc2**  
 [ 11.dxc6 cxb3 12.a4 Qc8± ]  
**11...Ne5 12.a4**  
 [ Δ12.g4!? Bg6 13.dxe6 fxe6 14.Ng5± ]  
**12...Nxf3+= 13.gxf3 Be7**  
 [ 13...Nd7 14.Bf4= ]  
**14.axb5= axb5 15.Rxa8** White pins:  
 Ra8xd8 **Qxa8 16.Bg5**  
 [ 16.Na3!± is worth consideration ]  
**16...e5± 17.Kg2**

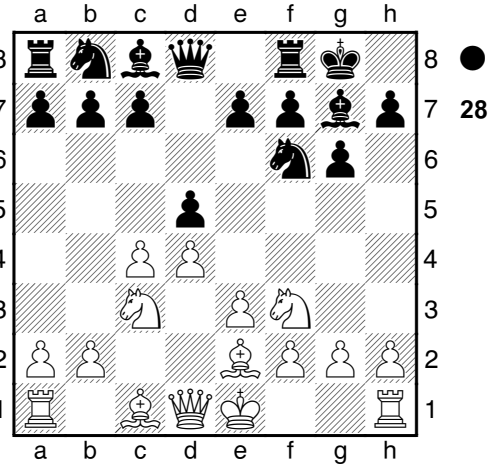
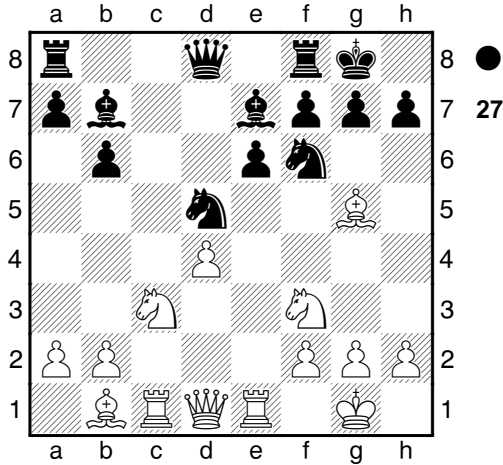
[ 17.Na3 0-0± ]  
**17...0-0**  
 [ 17...Nxd5!? 18.Bc1 Nc7 19.Nd2± ]  
**18.Qd2 Qd8 19.f4 exf4**  
 [ 19...Nd7 20.Bxe7 Qxe7± ]  
**20.Qxf4?**  
 [ Δ20.Bxf4!? and White could well hope  
 to play on Qd7 21.Qd4± ]  
**20...Nxd5!±** Discovered attack: f6, e7-g5  
**21.exd5?**  
 [ Δ21.Qf5!? Bxg5 22.Qxd5± ]  
**21...Bxg5+- 22.Qe4** Diagram



**Bh4??** simply marches past the door to  
 victory  
 [ Δ22...f5 and Black is on the road to  
 success 23.Qd4 Bc1-+ ]  
**23.Qxh7#**  
 1-0

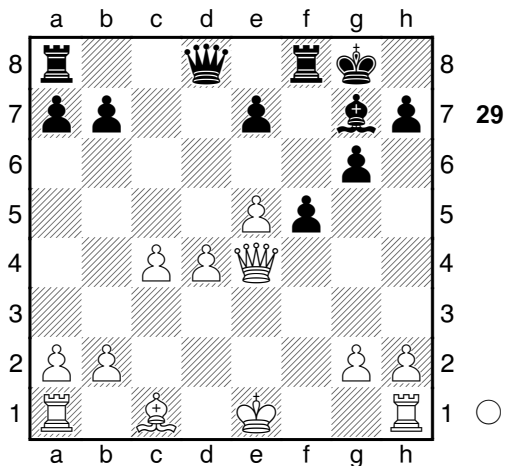
**Sugimoto, Koichi** **D30**  
 **Koyahata, Taku** **2025**  
 SapporoAutumn2015 (5.1) **1299**  
 [Fritz 11 (30s)] 12.10.2015

D60: Queen's Gambit Declined: Classical:  
 Unusual White 7th moves  
**1.d4 d5 2.c4 e6 3.Nf3 Nf6 4.Bg5**  
**Nbd7 5.e3 Be7 6.Nc3 c5 7.Bd3 cxd4**  
**8.exd4 dxc4 9.Bxc4 0-0 10.0-0 Nb6**  
**11.Bd3 Nbd5 12.Rc1 b6 13.Bb1 Bb7**  
**14.Re1** Diagram  
 last book move **Re8** White has a very  
 active position  
 [ 14...h6 15.Bh4= ]  
**15.Ne5 a6** Prevents intrusion on b5



[ 15...h6 16.Bd2± ]  
**16.a3** Black has a cramped position  
 [ 16.Qf3 h6 17.Ne4 a5± ]  
**16...h6=** Black threatens to win material:  
 h6xg5 **17.Bh4 Rf8**  
 [ 17...Rc8 18.f3= ]  
**18.Bg3** Black has a cramped position **Rc8**  
**19.Qd3 Ba8?**  
 [ △19...Re8!?!± and Black can hope to survive ]  
**20.Ng4+- b5??** Black has lost his nerve... understandable when you consider his position  
 [ △20...g6 21.Ne5 Nxc3 22.Rxc3 Rxc3 23.bxc3 Qe8 24.Qxa6 Nh5+- ]  
**21.Nxd5 Qxd5**  
 [ 21...Bxd5?? 22.Nxf6+ Bxf6 23.Qh7# ]  
**22.Nxf6+**  
 [ 22.Nxf6+ Bxf6 23.Qh7# ]  
**1-0**

12.0-0= ]  
**10.fxe5± Ne4 11.Nxe4 dxe4 12.Qg4**  
 White threatens to win material: Qg4xe4 **c5**  
 Black threatens to win material: c5xd4  
**13.Qxe4 cxd4 14.exd4 f5** Diagram  
 [ △14...Rc8 15.b3 b5± ]

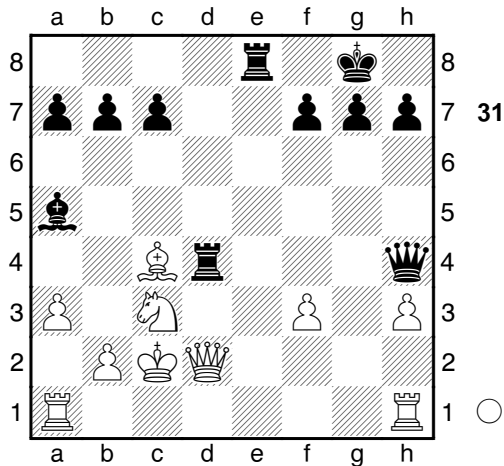


**15.Qxb7??** a transit from better to worse.  
 [ △15.Qe3± ]  
**15...Qxd4? 16.Qd5+ Qxd5 17.cxd5 Bxe5 18.0-0 Rfd8 19.Rd1 Rab8 20.Rb1 e6!** Deflection: d5 **21.Be3**  
 [ 21.dxe6 Rd6 Double attack ( 21...Rxd1+ Pinning ; 21...Rxd1+ Deflection ; 21...Rd6 Decoy ) ]  
**21...Rxd5 22.Rxd5 exd5 23.b3 Kf7 24.Rd1**  
 [ 24.Bc5 Rc8 25.b4 a5± ]  
**24...Ke6**  
 [ 24...d4 25.Bg5+- ( ≤25.Bxd4 Rd8+- ) ]  
**25.g3**  
 [ 25.Bd4 Bd6± ]  
**25...Rc8**

**Yoshii,Yukihiko** **D94**  
 **Saito,Naohiro** **1740**  
 SapporoAutumn2015 (5.2) **1390**  
 [Fritz 11 (30s)] 12.10.2015

D94: Grünfeld: 4 Nf3 Bg7 5 e3  
**1.c4 Nf6 2.Nc3 g6 3.d4 d5 4.Nf3 Bg7**  
**5.e3 0-0 6.Be2** Diagram  
 last book move **Bg4**  
 [ 6...dxc4 7.Bxc4 Nc6 8.e4= ]  
**7.Ne5**  
 [ △7.Qb3!? dxc4 8.Qxb7± ]  
**7...Bxe2= 8.Qxe2 Nbd7 9.f4 Nxe5**  
 [ 9...c5 10.cxd5 Nxe5 11.dxe5 Nxd5 ]





Qc6 27.Qd3 Re1-+ ]

### 26...Rc6

[ 26...Rxd8 and Black can already relax  
27.Qxd8+ Kg7 28.Qd3-+ ]

### 27.Rgd5

[ 27.Rb5 does not help much Rb6  
28.Rxe8+ Qxe8-+ ]

### 27...Rxd8 28.Rxd8+ Kg7 29.Qd4+ Qf6

### 30.Qd2

[ 30.Qxf6+ doesn't change the outcome of the game Rxf6 31.Rd7 h5-+ ]

### 30...Rd6

[ Δ30...Qxf3 and Black can already relax  
31.Rd4 Qf5+ 32.Kc1-+ ]

### 31.Rxd6 Qxd6 32.Qf2

[ 32.Qg5 does not win a prize h5-+ ]

### 32...b6 33.Kb3

[ 33.Qh4 is not much help h5 34.Qg5  
c5-+ ]

### 33...a5 34.f4

[ 34.Kc2 is no salvation Qd5 35.Qg3  
c6-+ ]

### 34...Qe6+

[ Δ34...Qd5+ and Black has it in the bag  
35.Kb2 a4 36.Kc1-+ ]

### 35.Kb2 c5 36.Qd2

[ 36.a4-+ no good, but what else? ]

### 36...a4 37.Kc1

[ 37.Ka1 what else? h5 38.Qc2-+ ]

### 37...Qb3 38.Qe3 Qxa3+ 39.Kd1 Qb3+

### 40.Ke1 Qe6

[ 40...Qe6 41.Qxe6 fxe6-+ ]

0-1

〇〇〇〇〇 第 10 回 札幌オータムチェス大会 最終結果 〇〇〇〇〇

	氏名	Rating	1R	2R	3R	4R	5R	順位	
	1 吉井優紀彦	2025	W4 1	B2 2	W3 3	B5 4	W7 5	1	
	2 西森 敏之	1837	B5 1	W1 1	B6 2	B3 2	W6 2	4	
	3 吉井優紀彦	1740	W6 1	B4 2	B1 2	W2 3	B4 3	2	
A	4 佐藤 泰司	1594	B1 0	W3 0	B5 0	W6 1	W8 2	4	(A1)
ク	5 齊藤 直弘	1390	W2 0	B6 1	W4 2	W1 2	B2 3	2	
ラ	6 小屋畑 拓	1299	B3 0	W5 0	W2 0	B4 0	B1 0	6	(A2)
ス									

- (注 1) 組み合わせは、コンピュータで SwissManager を使用して行いました。  
 (注 2) 持ち時間は、フィッシャー方式で最初に 40 分、1 手毎に 30 秒加算としました。  
 (注 3) タイ・ブレイクは行いませんでした。  
 (注 4) 全参加者をオープンクラスとして表彰しました。また、レイティング 1600 未満を A クラスとして表彰しましたが、オープンクラスで表彰されたプレイヤーは除外しました。

第 10 回 札幌オータムチェス大会 棋譜集

主 催： 札幌チェスクラブ  
 日 時： 2015 年 10 月 11, 12 日  
 T D： 金丸知司 (日本チェス協会 3 段, 札幌チェスクラブ代表)  
 場 所： 札幌市中央区北 2 条西 7 丁目 「かでの 27」  
 ソフト： 組み合わせ SwissManager (小屋畑拓)  
 : 解析, 印刷 Fritz11 (西森敏之)  
 制 作： 札幌チェスクラブ (西森敏之)

オープン・クラス



準優勝 齊藤直弘  
優勝 杉本公一  
準優勝 吉井優紀彦

A クラス



第1位 佐藤泰司  
第2位 小屋畑拓



西森敏之 金丸知司 佐藤泰司 小屋畑拓  
齊藤直弘 杉本公一 吉井優紀彦